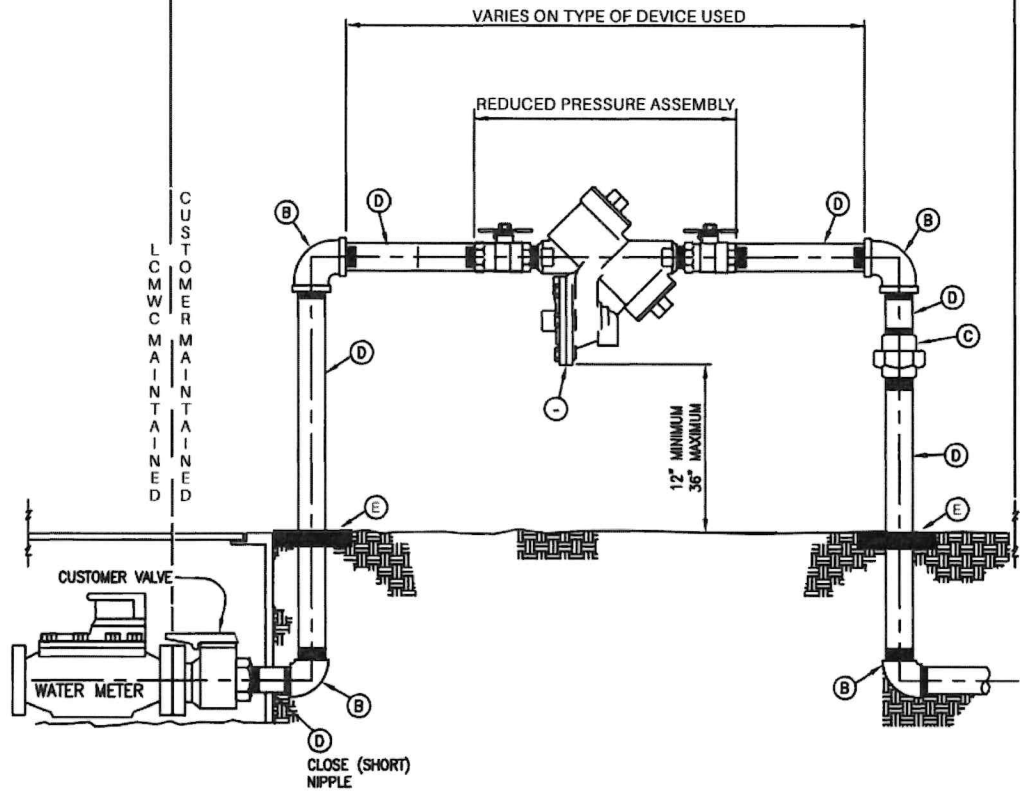


LCMWC OWNED AND MAINTAINED ← → LCMWC REQUIRED INSTALLATION → ← CUSTOMER OWNED MAINTAINED / TESTED / CERTIFIED → ← CUSTOMER MAINTAINED →



**NOTES:**

1. ALL INSTALLATIONS SHALL BE ABOVE GROUND.
2. ALL BACKFLOW PREVENTION DEVICES SHALL BE IMMEDIATELY ADJACENT TO THE WATER METER UNLESS APPROVED BY RCWD PRIOR TO INSTALLATION.
3. THE BACKFLOW PREVENTION DEVICE SHALL BE SELECTED FROM THE APPROVED USC LIST ON FILE WITH THE DISTRICT.
4. NO CONNECTIONS SHALL BE MADE BETWEEN THE WATER METER AND THE BACKFLOW DEVICE.
5. TYPE OF BACKFLOW PREVENTION DEVICE SHALL BE BASED ON THE DEGREE OF HAZARD, AS DETERMINED BY RCWD.
6. APPROPRIATE TEST COCKS SHALL BE IN PLACE AT ALL TIMES.
7. DISTRICT SHALL HAVE ACCESS TO BACKFLOW PREVENTION DEVICE FOR THE INITIAL CERTIFICATION TEST.
8. REFER TO STANDARD DRAWINGS FOR INSTALLATION OF WATER METER & SERVICE.
9. NIPPLES SHALL BE BRASS, COPPER, OR GALVANIZED STEEL (NO PVC)

**MATERIALS**

- (A) BACKFLOW PREVENTION DEVICE (U.S.C. APPROVED)
- (B) 90° ELBOW
- (C) UNION (THREADED UNION RECOMMENDED FOR REMOVAL AND REPAIR OF DEVICE)
- (D) PIPE/NIPPLE VARIES IN LENGTH (SEE NOTE NO. 9)
- (E) 12" X 6" THICK CONCRETE COLLARS

REVISION	
NO.	DATE
1	5/23/24

APPROVED: *3/6/25*  
  
 GENERAL MANAGER



LA CUMBRE MUTUAL WATER COMPANY  
 695 VIA TRANQUILA  
 SANTA BARBARA CA, 93110

STANDARD DRAWING  
 REDUCED PRESSURE PRINCIPLE  
 BACKFLOW PREVENTION  
 ASSEMBLY  
 2" AND SMALLER

SCALE: NTS  
 DWG. NO.  
 BF - 1